



Preston Rd. and Wallace Rd.

Between Celina, TX and Gunter, TX in Grayson County

138.7 acres in the Preston
Road and North Tollway
Corridor

ADDITIONAL INFO

Acreage: 138.7409
Price: \$39,000 per acre (\$5,410,860)
Zoning: Gunter ETJ
Future Use: Commercial/Industrial/Residential
Frontage: ~4,750 feet along Preston Road

MCM REAL ESTATE ADVISORS

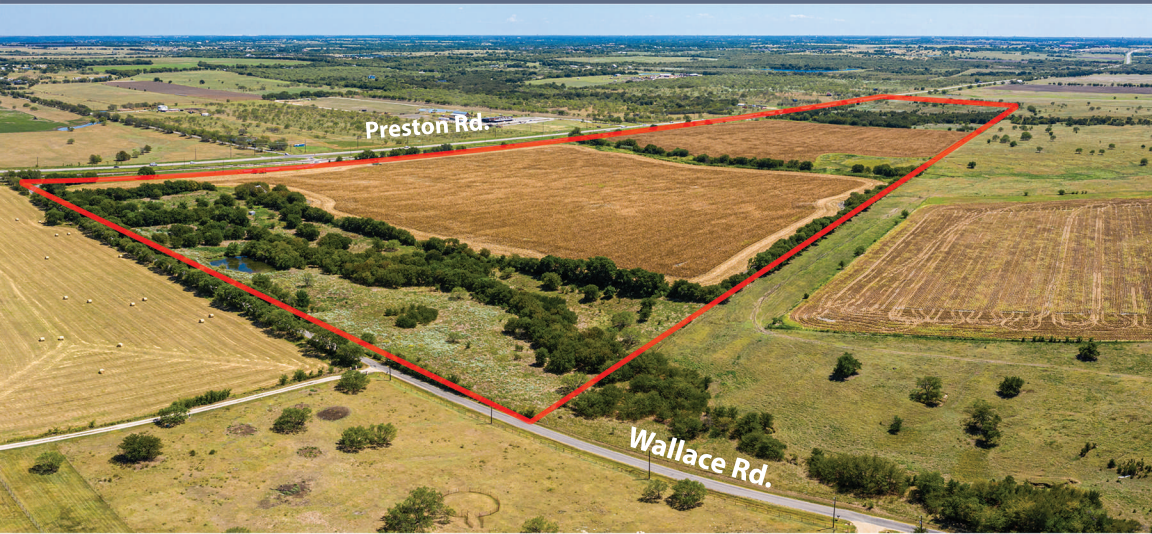
901 Boland Street, Fort Worth TX 76107
Office : 817-550-3363

Matt McWilliams
matt@mcmra.com
www.MCMRA.com



Preston Rd. and Wallace Rd.

Between Celina, TX and Gunter, TX in Grayson County



138.7 Acres



MCM REAL ESTATE ADVISORS

901 Boland Street, Fort Worth TX 76107
Office: 817-550-3363

Matt McWilliams
matt@mcmra.com
www.MCMRA.com

Survey

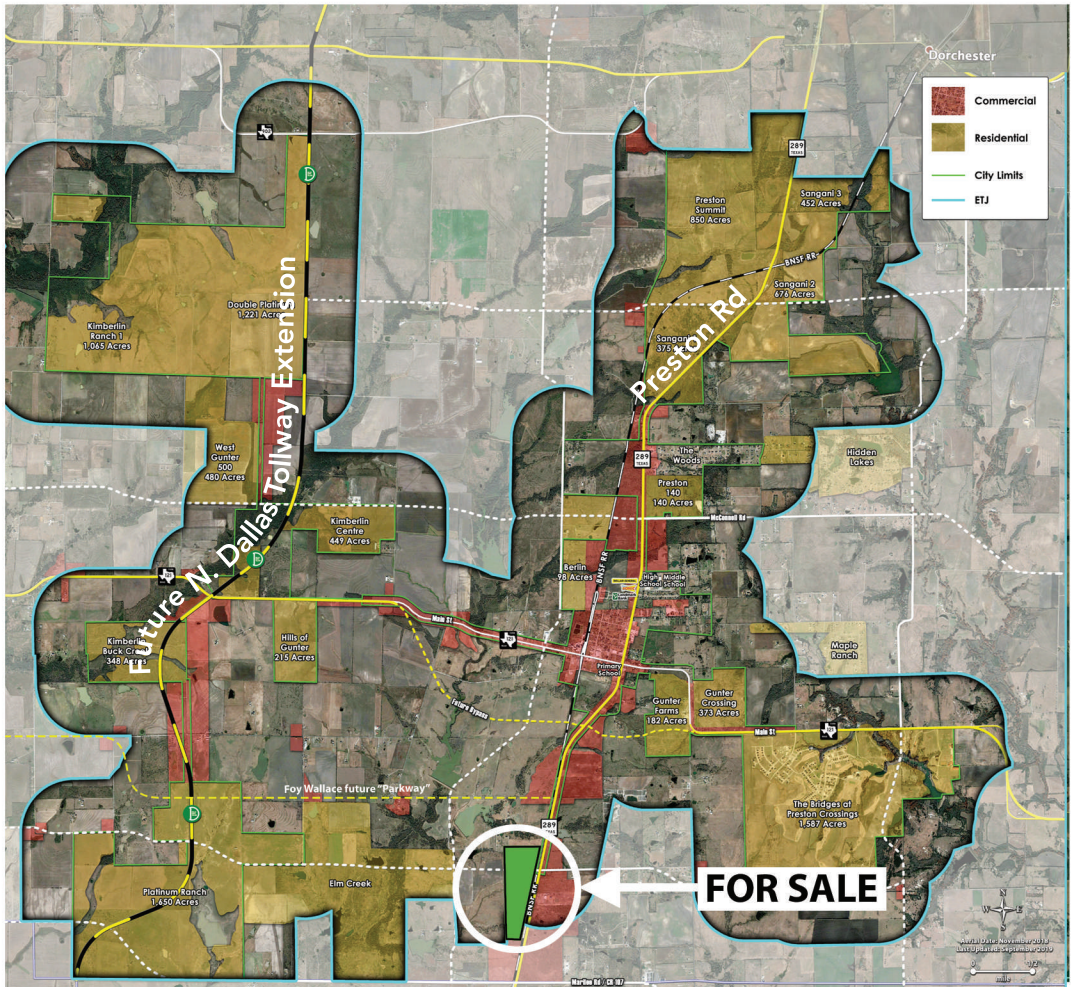


Matt McWilliams
matt@mcmra.com
www.MCMRA.com

Preston Rd. and Wallace Rd.

Between Celina, TX and Gunter, TX in Grayson County

Future Land Use



MCM REAL ESTATE ADVISORS

901 Boland Street, Fort Worth TX 76107
Office: 817-550-3363

Matt McWilliams
matt@mcmra.com
www.MCMRA.com